



ARTS IN THE ALPS  
SFR CRÉATION

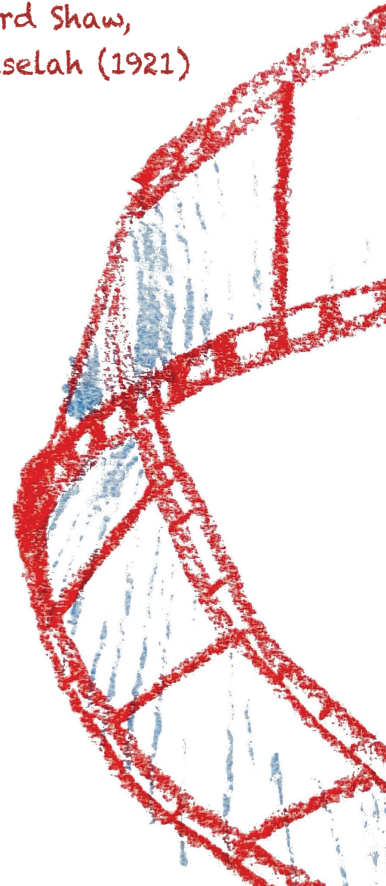
MAISON DE LA CRÉATION ET DE L'INNOVATION



MAISON  
DE LA  
CRÉATION  
ET DE  
L'INNOVATION

You see things; and you say 'Why?'  
But I dream things that never were; and I say 'Why not?'

George Bernard Shaw,  
Back to Methuselah (1921)



# Thinking, experimenting and practicing research creation

Established in the heart of the Grenoble Alpes University, the Structure Fédérative de Recherche Création coordinates research and educational activities around multidisciplinary creative practices and processes in the arts, humanities and social sciences at the Maison de la Création et de l'Innovation.

It stimulates exploration and experimentation, exchange and interaction related to the challenges of research creation in the fields of architecture, literature, languages, theatre, cinema, dance, circus, music, and computer science.

The structure aims to encourage interdisciplinary synergies between theory and practice and to promote the production, transmission and sharing of new forms of knowledge and skills by supporting projects carried out in collaboration with local, regional, national and international partners.



# Affiliated Laboratories

---

In 2016 the UMR Litt&Arts launched the SFR Création/Arts in the Alps which now includes thirteen laboratories and over a hundred academics:

- **AAU UMR** (Ambiances Architectures Urbanités / Équipe CRESSON)
- **AE&CC** (Architecture, Environnement & Cultures Constructives)
- **GIPSA-lab UMR** (Grenoble Images Parole Signal Automatique, Département Parole et Cognition)
- **GRESEC** (Groupe de Recherche sur les Enjeux de la Communication)
- **ILCEA4** (Institut des Langues et Cultures d'Europe, Amérique, Afrique, Asie, Australie)
- **IPhiG** (Institut de Philosophie de Grenoble)
- **LARHRA UMR** (Laboratoire de Recherche Historique Rhône-Alpes)
- **LIDILEM** (Laboratoire de Linguistique et Didactique des Langues Étrangères et Maternelles)
- **LIG** (Laboratoire d'Informatique de Grenoble)
- **LITT&ARTS UMR** (Arts et Pratiques du Texte, de l'Image, de l'Écran et de la Scène)
- **LJK** (Laboratoire Jean Kuntzmann)
- **LUHCIE** (Laboratoire Universitaire Histoire Culture Italie Europe)
- **PACTE UMR** (Laboratoire de Sciences Sociales)

LIDILEM

UNIVERSITÉ  
Grenoble  
Alpes



UMR 5316  
**LITT  
& ARTS**



**Luic**ie  
Laboratoire Universitaire  
Histoire Cultures Italie Europe

**P a c t e**

# Our research strands

SFR Création's scientific approach is structured around five main research areas:

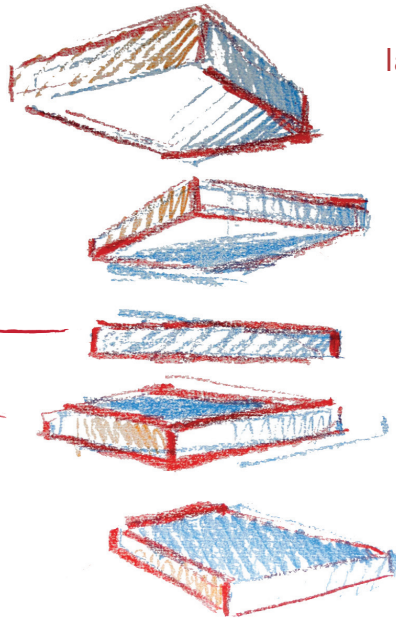
the analysis of creative processes and practices

the experimentation of new languages, forms and practices of creation

the historical and temporal study of creation

the observation and criticism of the socio-cultural implications in artistic activities and the arts industry

the reflection on the territorial and political aspects of creation



# Programs

---

SFR Création has seven interdisciplinary scientific programs which all contribute, in their own way, to the development of scientific and educational projects.

## **ARTS-SANTÉ** – Arts-Health

This research program is the result of artistic and research projects carried out in partnership with the fields of nursing and medicine, notably with the Grenoble University Hospital and the Professional Health Training Institute (IFPS). It develops performance and health research in the area of CARE and Medical Humanities. This program addresses the esthetic, ethical and multidisciplinary links concerning the arts and the socio-medical world.

## **ATELIER DE TRADUCTION-CRÉATION** – Translation-Creation Workshop

This program is intended to explore the practices of creation through translation. It brings together academics from various specialties (French language and stylistics, performing arts, foreign languages, French literature, ancient languages, translationology) and people with different professional backgrounds (translators, writers, actors, stage directors, etc.). Its methodological approach is to build knowledge based on the observation and experimentation of creative practices at work in and through translation.



## **AZQWERTY**

This program analyses creative practices in their relations with the media in the scope of media writings, including digital writings, with a particular interest for writings of the everyday in their peculiar creative dynamics (comics, blogs, travel diaries, fanfictions, tweets, etc.). The pooling of writing methodologies from literary analysis, information and communication studies, humanities and social studies aims to work on the ways in which the imagination of the «Text» is constructed, raising social, cultural and political questions.

**ECLAIR** – Choreographic and circus experiences, artistic practice embedded in research.

This program articulates the practical, theoretical and cognitive issues arising from body experiences in the artistic fields of dance, circus and performance. Using interdisciplinary practice-based research methods, the programme seeks to identify the kinesthetics resulting from new creative processes and contemporary repertoires. The idea is also to consider how new traces of creative processes can be constituted, transmitted and developed in research.

**GeCLA** – Genesis of literary and artistic creations

This programme offers a reflection on the creative journey that leads the writer, the filmmaker and every artist from the world to the work, from the project to its realization, from the draft to the text, from the sketch to its completion. This reflection focuses on writing processes through the exploration of the writers' and artists' archives, but also on the making of the work as a coherent imaginary and stylistic ensemble, progressively elaborated by editorial logics and thematic critical discourses, or even the imaginary language and linguistics associated, in particular, with scriptural productions.



## **OPSIS** – Observatory of innovative stage practices

Dedicated to the analysis of what leads stage practices to reinvent themselves, this programme features a diachronic axis, which studies the evolution of these practices from Antiquity to the modern days, questioning in particular the moments of rupture, and a synchronic axis, which examines current creative logics in light of technological innovations and the socioeconomic contexts. It aims to promote the development of experimental research and data archiving, with the objective of making them available to the public.

## **REFLEX** – Reflections on the film as a place for experiences

This program in cinema proposes reflections (thought, projected images) on the film (its material) and the places (whether they are places of creation or diffusion) of its experiences (realities, alterities, forms). The REFLEX project combines creation, culture and practice. By focusing on writings and images, in its research and pedagogical dimensions, the project questions methods and processes to understand creation with its different actors and contexts. In order to understand the film work better by putting it back into its creative context, REFLEX also studies the cinematic techniques at a time where the artist, working between a traditional approach and industrial needs, must think in terms of his own laboratory and its economics.

## **INTERNATIONAL WRITING RESIDENCIES**

This project, launched in 2019 with renowned and prize winning Canadian writer and editor Lisa Moore, promotes voices of diversity through the in-residence hosting of writers from around the world. The residency facilitates the exchange of interdisciplinary and intercultural knowledge resulting from artistic practices and is coordinated by UGA publishers and their *Paroles d'Ailleurs* series.

---

## Training and Events

Arts in the Alps brings together educational and research activities, and addresses the issues of artistic practices, thoughts and processes from a multidisciplinary perspective, while promoting experimental approaches that bring together artists and researchers.

### **Arts in the Alps, Biannual Doctorate School**

organized every two years, brings together an interdisciplinary and international community of researchers and doctoral candidates in order to deploy disciplinary and methodological synergies to promote practice-based research. Participants are supported in the experimentation of new research creation practices with the aim of developing tools and processes related to the sensorially-informed research in the definition and treatment of a research production.

### **The Research Creation Workshops**

provide research creation training for our students and faculty. Conducted by international artist-researchers and directly related to their scientific and/or artistic works, the workshops are designed as training tools for interdisciplinary research and the production of diverse scientific forms and formats.

### **Thematic Conferences**

are annual interdisciplinary talks with internationally renowned researchers and artists to present their most recent work in their respective disciplines on epistemological, poetic and methodological topics in research creation.

# Projects

---

The synergies created within the SFR have led to the emergence of major projects, in which:

## **PERFORMANCE LABORATORY (PL), winner of IDEX CDP 2018**

Created by member laboratories, the PL develops a new dynamic between the scientific communities in the fields of performing arts, social sciences and computer science. This allows, from a methodological and epistemological point of view, to push the boundaries of these scientific disciplines, in order to set up a new multidisciplinary ecosystem linking research of bodies, societies and technologies.

## **TRACES - Techniques and training in artistic research, creation and social sciences, IDEX 2019-2020**

TRACES developed close connections between research, training and creation at the crossroads of different Masters. The purpose of this project is to structure teaching units (EU) common to graduate training programs in artistic creation, in international development, in the school of art and design and in health.

## **REACH - Research creation: collaborative practices in Arts and History**

The main objective of REACH is to place UGA on the global map as a state-of-the-art laboratory for experimental research in the arts and humanities. Research-creation introduces new modalities of knowledge transfer, experimentation and scientific production such as virtual museums, exhibitions performances, films and creative writing. Our contribution to research-creation is to articulate an unprecedented interdisciplinarity between the arts (cinema, performing arts and also literary and intercultural studies) and history through collaborative scientific productions.



REACH's originality and specificity is the twinning of arts and history with two laboratories in arts: Litt&Arts and Ilcea4 as well as two in history: Larhra and Luhcie. This will be coordinated with the SFRecherche-creation network in the new artistic production facilities of the Maison de la création et de l'innovation. Our goal is that REACH @UGA will attract a diversity of international students, artists and scholars to share in new forms of research tools, thinking and scientific collaborative production to address the urgent issues of a changing world.

# Spaces

---

The facilities at the Maison de la Création et de l'Innovation became available in the spring of 2019. They provide students, doctoral students, researchers and artists with several spaces adapted for creative experimentation (performances, collaborative experiments, residencies, artistic production workshops, exhibitions, conferences, etc.). The proximity to the Performing Arts Department contributes to a new ecosystem that is favorable to the development of new research and training projects. The facilities are versatile and offer a range of specific equipment, designed to meet the requirements of creative research projects and teaching methods for artistic practice.

## Live Art lab

A research creation lab for practiced based experimentation. This includes research in performance, scenic design, motion capture and installation. We host research projects in the digital arts, visual arts, performance, circus, dance and/or theater and artists affiliated with partnered institutions. With a surface area of 300 m<sup>2</sup>, this room is equipped with a modular stage and bleachers, a sound and light control system which facilities diverse needs. Projects developed here are part of research programmes such as: ECLAIR, REFLEX and OPSIS programs, the Performance Lab and pedagogical actions within the framework of the Master's in Artistic Creation.



## Film and audiovisual production units

Designed in direct connection with the activities of the REFLEX program, the space is made up of a 60-seat cinema projection room, two editing rooms and one sound recording room, as well as a room dedicated to the online magazine: *Seul le cinéma*. These spaces facilitate ongoing research processes in cinema.

These equipped facilities are a major asset both for research and teaching in the REFLEX program and the Graduate cinema programs. They provide optimal conditions for a professional approach to cinema making and post production for pedagogic and practice based research.



## Digital arts & humanities lab

Two spaces, each equipped with 20 computer stations, with softwares used in data mining and analysis, as well as in digital arts and humanities, are made available for the GeCLA and AZQWERTY programs, but also for all projects exploring: digital publishing and philology (encoding,



indexation, textual genetics, alignment...); data analysis and visualization (computational textometry and stylistics, culture analytics); digital archives according to web standards; creation of natively digital works, from digital literature to visual communication and graphics, through innovative forms of knowledge transmission such as the web documentary or the enriched book.

### **Somatic labs**

These 80 m<sup>2</sup> studios with sprung floors, designed in connection with the ECLAIR program, are at the disposal to organize workshops of somatic practices, dance, performance practices. They can host workshops, masterclasses with professional artists in the performing arts, projects that use body practices such as those of the Performance Lab, the Arts-Health program, and the mutual courses for medical students and the Master's in Artistic Creation.





## Centre for Performance Archives

In strong collaboration with the OPSIS program (Observatory of Innovative Stage Practices), this resource centre includes archival materials in theatre, circus, dance and performance. The centre is also equipped with dedicated archiving and consultation platforms, contributing to new documentation methods and innovative performance archival research.

## Artistic production workshops

Designed for the manufacture of objects of large volume and/or requiring specific manipulations, these spaces are used for artistic or research projects but also for educational purposes. They open their doors, for example, to courses (drawing, painting, sculpture puppetry, scenography, architectural planning workshops) in the Master's in Artistic Creation and ESAD (École supérieure d'art et de design Grenoble-Valence).





## Partnerships

---

SFR Création/Arts in the Alps develops scientific, institutional and cultural partnerships. The aim is to involve academic, artistic and socio-cultural actors, with the goal of building a broad collaborative network, leading ultimately to a more efficient response to large-scale international calls for projects and thus contributing to the influence of the research and training carried out in the arts and humanities at UGA.

ESAD (École supérieure d'art et design Grenoble-Valence) | ENSAG (École nationale supérieure d'architecture de Grenoble) | ENSATT (École nationale supérieure des arts et techniques du théâtre) de Lyon | CHU (Centre Hospitalier Universitaire) de Grenoble | CCN2 - Centre chorégraphique national de Grenoble | CDCN - Le Pacifique, Centre de développement chorégraphique national de Grenoble | Cinéma le Méliès | Maison de la poésie Rhône-Alpes | Maison de l'Image de Grenoble | MC2 : Maison de la Culture de Grenoble | Hexagone scène nationale de Meylan | LUX scène nationale de Valence Cinémathèque de Grenoble | MAGASIN des horizons - Centre National d'Arts et de Cultures | Institut National de Recherche en Informatique et en Automatique (INRIA) | CNAC - Centre national d'art du cirque | CRH UMR 8558 - Centre de Recherches Historiques (EHESS, CNRS) | Université d'Artois | CNC (Centre National du Cinéma et de l'Image Animée)

Université d'Aberdeen | Université de Cambridge | Université Queen Mary de Londres | Université d'Oxford | Université de Roehampton | Université de Cork | Université de Brown | Université de Stanford | Université de Duke | Université de l'Ohio | Université de Californie-Irvine | Université du Québec à Montréal | Université de Concordia | Université de Montréal | Université de Toronto | Université de Colombie Britannique | Université de New South Wales | Welcome Center Cultures and Environments of Health – Université d'Exeter

---

## Networks

**TORCH Oxford** – *The Oxford Research Centre in the Humanities*

**CRASSH Cambridge** – *Centre for Research in the Arts, Social Sciences and Humanities*

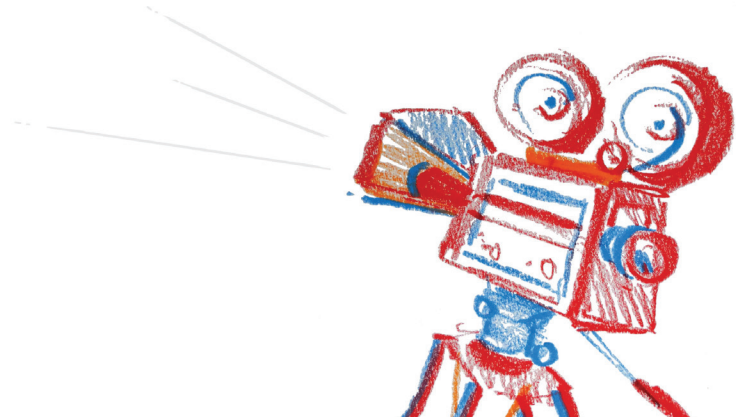
**Hexagram** – International network dedicated to research-creation in media arts, design, technology and digital culture carried out in Canada by the Université du Québec à Montréal (UQAM) and Concordia University | <https://hexagram.ca/index.php/fr/>

**RnMSH** – National Network of Houses of Human Sciences | <http://www.msh-reseau.fr/>

**ACD** – Association of Dance Researchers | <http://chercheurs-en-danse.com/fr>

**PSI** – Performance Studies International | [www.psi-web.org](http://www.psi-web.org)

**COST** – European Forum for Advanced Practices | <https://advancedpractices.net/>



# RESCAM

---

Since 2020 the SFR Création is the coordinator of an inter-university network RESCAM (Réseau Création Arts Médias). Founded in 2011, this network brings together 18 doctoral schools in France. Around 4,000 doctoral students and more than 1,000 academics benefit from this extensive network to develop, disseminate and promote practice based research in the Arts and Media. By including «Creation» in its title, the network demonstrates its interest in research that reflects on its process and generates tools and approaches that adapt to artistic and cultural change in the contemporary world.

The main mission of RESCAM is to support doctoral schools with activities that develop and promote the ideas of a research creation, based on a diversity of specialties, trainings, evaluation and career development policies.

The Vademecum developed by RESCAM presents the common principles of a research which requires a doctorate of artistic creation. Its aim is to give research in Arts and Media the authority and visibility it deserves, in a society in which Arts and Media enable intellectual development for the future.



More broadly, RESCAM contributes to sharing achievements that represent an added value in relation to the missions of doctoral schools (cross-sectoral seminars, workshops, summer schools, and other innovative initiatives).

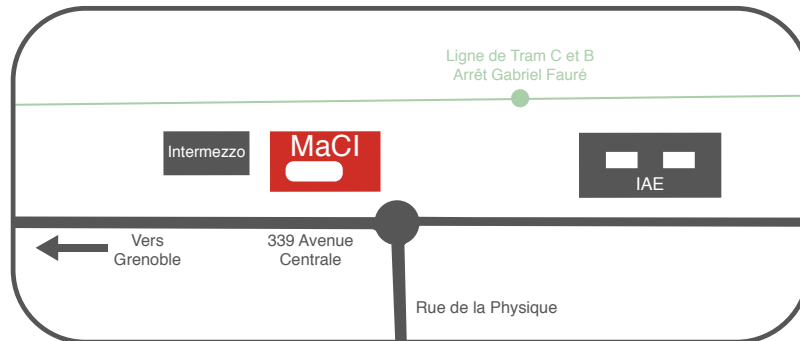
Aware of the complexity and convinced of the virtues of heterogeneity, the network is keen to develop partnerships with the arts and culture sector, but also with institutional and private partners.

# Contacts

SFR Création  
MaCI  
Université Grenoble Alpes  
339 Avenue Centrale - 38400 Saint-Martin-d'Hères

phone number : +33 4 57 04 14 32  
e-mail : [sf-recherche-creation@univ-grenoble-alpes.fr](mailto:sf-recherche-creation@univ-grenoble-alpes.fr)

websites : <http://maisondelacreation.univ-grenoble-alpes.fr/>  
<http://arts-in-the-alps.com>  
<https://performance.univ-grenoble-alpes.fr>



## Team

Gretchen Schiller, director  
[gretchen.schiller@univ-grenoble-alpes.fr](mailto:gretchen.schiller@univ-grenoble-alpes.fr)

## SFR Création

Nataliya Grulois, administrative manager  
[nataliya.grulois@univ-grenoble-alpes.fr](mailto:nataliya.grulois@univ-grenoble-alpes.fr)

Martine Fontaine, administrative accountant  
[martine.fontaine@univ-grenoble-alpes.fr](mailto:martine.fontaine@univ-grenoble-alpes.fr)

Michel Morin, technician  
[michel.morin@univ-grenoble-alpes.fr](mailto:michel.morin@univ-grenoble-alpes.fr)

## Performance Lab

Virginie Meunier, technical coordinator  
[virginie.meunier@univ-grenoble-alpes.fr](mailto:virginie.meunier@univ-grenoble-alpes.fr)

Vincent Maillard, webdesigner  
[vincent.maillard@univ-grenoble-alpes.fr](mailto:vincent.maillard@univ-grenoble-alpes.fr)



Thank you to Jonathan McCree for his drawings  
Design : Antonin Duhoux